



Creating Your Own Training Text for Dragon NaturallySpeaking

(Thanks to Lunis Orcutt at Knowbrainer.com and Joel Gould, who created versions of these instructions in the past and which served as the basis for our own attempt; see references at bottom)

Since some users might find the training text included with Dragon to be difficult, it is sometimes preferable to use a personalized training text. There are a few caveats to the process:

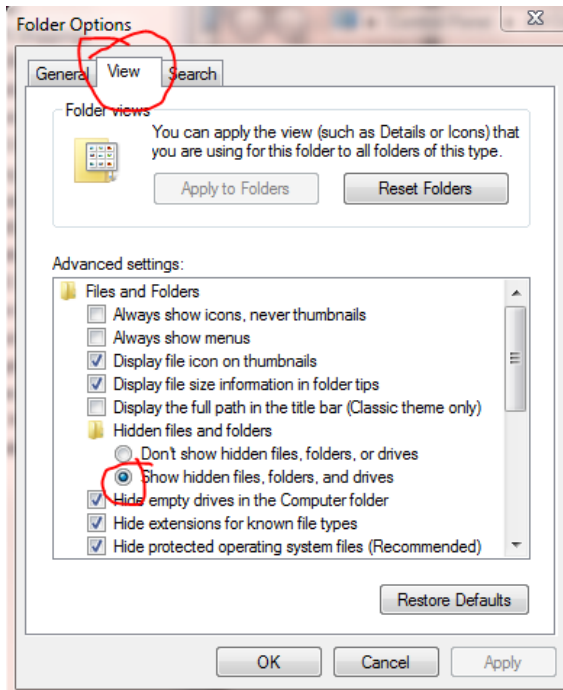
1. Your personalized training text must be of sufficient length that it will take the full 5-6 minutes required of Dragon during the reading. It is OK if it is too long, but it cannot be too short. I recommend you shoot for 2000 or so words.
2. All of the words contained within the training text must exist in the Dragon vocabulary you plan to use.
3. The process requires making some alterations to a couple of files within the Dragon program.

Step 1: Create your training text:

1. Prepare your text in a word processing document
2. Your text should be formatted such that each paragraph represents a single line in the file; it is ok to have blank lines between paragraphs if you choose (these will be ignored by dragon); use only standard punctuation – no special characters such as copyright marks, accented characters, etc.
3. Spell check your text (critical)
4. Confirm the number of words using the functionality in your word processing program (shoot for at least 2000)
5. Save your file as a .text file (no .RTT, .doc, etc.)

Step 2: Be sure that viewing hidden files and folders is turned on for your computer

1. In Windows Vista or 7 go to Control Panel > Folder Options and click on the "View" tab. Under the category of "Hidden Files and folders", select the "Show hidden files and folders" radio button" (see below)



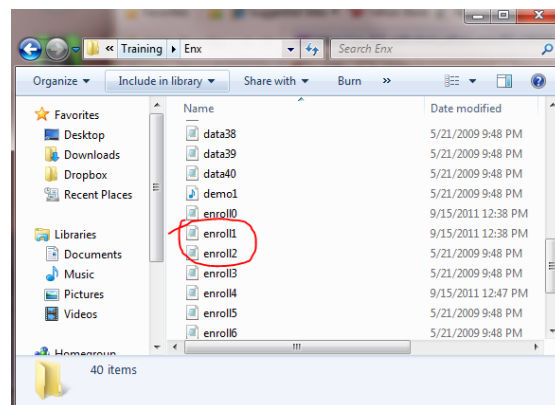
Step 3: Add your text to the Dragon training Directory

1. Go to the following location:
 - a. Windows 7 or Vista:

C:\ProgramData\Nuance\NaturallySpeaking10\Data\Training\Enx

- b. Windows XP:

C:\Documents and Settings\AllUsers\ApplicationData\Nuance\NaturallySpeaking10\Data\Training\Enx



2. At the above location, you will see a series of files, including some entitled “data.bin” and some entitled “enroll.bin” (see figure above)

3. Add your text file to this folder. It does not matter whether your file name ends with .bin. It is important that you not have any spaces in your file name.

Step 4: Modify the default training directory to include your training file

1. From within the folder above in which you added your training file, open the file titled “enroll0.bin”. You will see the following text:

Kennedy's Inaugural Address (Medium Reading: Historical Speech)
data34.bin

.....

.....

The Captain of Battery Park (Reading for Teens: Adventure)
data13.bin

2. Add two lines of text to the end of this list, adding both the description to show up in the list of training text and the name of your training text, as shown below. Substitute the actual name of your text file for the “myfile.txt”

.....

.....

The Captain of Battery Park (Reading for Teens: Adventure)
data13.bin

My new enrollment text
myfile.txt

3. Save the file (this adds your training text as an option to the existing user)
4. Follow the same steps and add the two new lines to the file entitled “enroll1.bin”. Save the file. (this adds your training text as a option for a new user).

Step 5: Test your text: To be sure that it works OK, test your new text. Enroll yourself as a new user and test the training test. Make sure that Dragon doesn’t get hung up on any of the words which would indicate the word is not in the dictionary.

Step 6: Sharing your training text: Once you have created and tested your training text, it is possible to add this to the Nuance Program Data training file on any version of Dragon, whether a user profile has been created or not. Simply follow the steps above after the program is installed but before the user has set up the first profile.

References:

<http://www.synapseadaptive.com/joel/changingaenrollmentatext.htm>

http://www.knowbrainer.com/downloads/NatPro_Quick_Tips.pdf (search “training text”)